

706/3 Archer Street, Toowong 4066, QLD

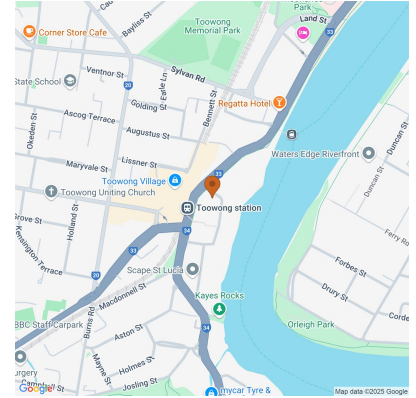
\$870 per week

House Rent ID: 6016897

\$3,480 bond



Why pay for your bond now, when you can pay it off later?
Visit: www.rent.com.au/rentbond



Luxury Living on Brisbane Rivers Edge

Benefiting from a rare riverside location just minutes from Brisbane's CBD and steps to Toowong Village, The Patterson by Mosaic boasts style and functionality in equal measure.

Date Available
6th May 2025

Inspections
Inspections are by appointment only

Designed in partnership with one of Australia's most progressive architecture firms, Rothelowman, residences are spacious and intelligently considered, with flowing open planning and premium finishes and fixtures.

Generous balconies are perfect for taking advantage of Brisbane's enviable subtropical climate and enjoying the views from its prime riverside location. Meanwhile, elevated ceilings and full-height double-glazed windows and doors ensure fresh breezes and abundant natural light penetrate deep into living spaces.

On top of this, residents benefit from an extensive array of world-class health and lifestyle amenities, including a ground-floor food and beverage offering, wine room, library, state-of-the-art gymnasium, and breathtaking rooftop with pool, fire pit, barbeque/dining areas, and spectacular views to Brisbane CBD, river, and hinterland.

The Patterson was one of Mosaic's fastest-selling Brisbane addresses we don't expect these beautiful homes to be available for long. Enquire to enjoy first-look access.

The Patterson's generously scaled 2-bedroom residences feature:
Intelligent, open planning for maximum functionality.
Seamless living spaces that flow onto an oversized balcony.

Josh Braidwood
Phone: 1300 985 852
mosaicproperty@mail.inspectrealestate.com.au

706/3 Archer Street, Toowong 4066, QLD

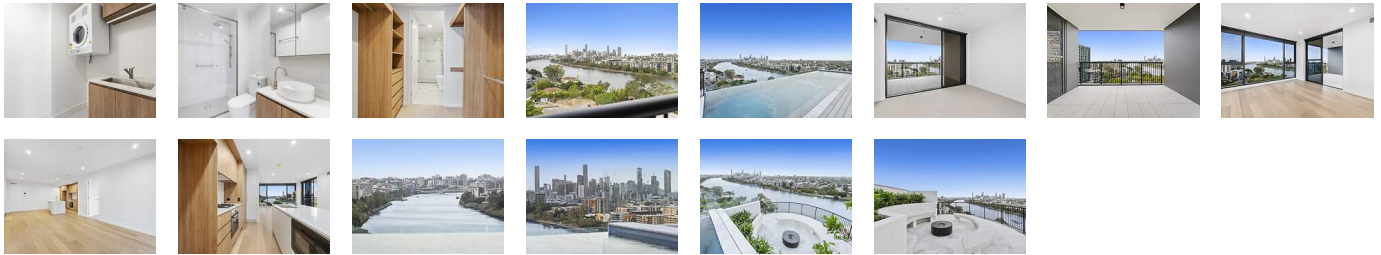
\$870 per week

House Rent ID: 6016897

\$3,480 bond



Why pay for your bond now,
when you can pay it off later?
Visit: www.rent.com.au/rentbond



Property details continued from page 1:

... Spacious bedrooms, with the master featuring an ensuite.

Ducted air-conditioning throughout and ceiling fans to all bedrooms.

Custom, premium-finish kitchens with Bosch appliances, including microwave and integrated dishwasher.

Reconstituted stone benchtops in the kitchen and bathrooms.

Large bedrooms with built-in robes and ensuite to the master.

Custom vanity cabinetry with mirror storage in the bathrooms, along with a semi-frameless shower screen, full-height ceramic tiles, and designer accessories.

Laundry includes stainless steel tub and front load tumble dryer.

Generous storage.

1 secure basement car park.

Dual lift access.

Audio visual intercom system.

Secure mailboxes and CCTV security camera systems in common areas.

Generous bicycle spaces.

Exceptional building-wide wireless internet via Gigafy. Residences are automatically connected before moving in, with the first two months provided to you at no cost.

An E-Concierge service to assist in making life at The Patterson extra effortless.

The Patterson is also an Urban Development Institute of Australia (UDIA) certified 6-Leaf EnviroDevelopment, with a range of sustainability initiatives that make it both beautiful and friendlier on the environment.

With multiple award-winning projects to our name, Mosaic has perfected the art of delivering high-quality, exquisitely designed, and superbly finished residential properties across Southeast Queensland. Enquire now for the opportunity to call our latest luxury address home!

Would you like to view this property? To register your interest please click the "Get in Touch or Book an Inspection" button and follow the prompts.

Disclaimer: Whilst every care is taken in preparing the information in this marketing, Mosaic Property Management will not be held liable for any errors in typing or information. All interested parties should rely upon their own enquiries in order to determine whether or not this information is in fact accurate.